

# Memoria ONT 2011



# Índice

|       |   |  |
|-------|---|--|
| 1.    | Introducción.....                           |  |
| 2.    | Donación.....                               |  |
| 2.1.  | Actividad de donación                       |  |
| 2.2.  | Características de los donantes             |  |
| 2.3.  | Órganos desechados                          |  |
| 2.4.  | Negativas familiares                        |  |
| 3.    | Trasplante renal.....                       |  |
| 3.1.  | Actividad de trasplante renal               |  |
| 3.2.  | Riñones generados y rechazados              |  |
| 3.3.  | Intercambio renal y riñones enviados        |  |
| 3.4.  | Lista de espera renal                       |  |
| 4.    | Trasplante hepático.....                    |  |
| 4.1.  | Actividad de trasplante hepático            |  |
| 4.2.  | Características de los donantes hepáticos   |  |
| 4.3.  | Hígados generados y desechados              |  |
| 4.4.  | Intercambio hepático                        |  |
| 4.5.  | Indicaciones de trasplante                  |  |
| 4.6.  | Evolución de la lista de espera hepática    |  |
| 4.7.  | Probabilidad de trasplante                  |  |
| 4.8.  | Urgencias hepáticas                         |  |
| 4.9.  | Grupos sanguíneos                           |  |
| 4.10. | donante no convencional                     |  |
| 5.    | Trasplante cardíaco.....                    |  |
| 5.1.  | Actividad de trasplante cardíaco            |  |
| 5.2.  | Características de los donantes cardíacos   |  |
| 5.3.  | Corazones generados y desechados            |  |
| 5.4.  | Intercambio cardíaco y corazones enviados   |  |
| 5.5.  | Indicaciones de trasplante                  |  |
| 5.6.  | Evolución de la Lista de espera cardiaca    |  |
| 5.7.  | Probabilidades de trasplante                |  |
| 5.8.  | Urgencias cardíacas                         |  |
| 6.    | Trasplante pulmonar.....                    |  |
| 6.1.  | Actividad de trasplante pulmonar            |  |
| 6.2.  | Características de los donantes pulmonares  |  |
| 6.3.  | Pulmones generados y desechados             |  |
| 6.4.  | Generación e intercambio pulmonar           |  |
| 6.5.  | Indicaciones de trasplante                  |  |
| 6.6.  | Evolución de la Lista de espera pulmonar    |  |
| 6.7.  | Probabilidades de trasplante                |  |
| 6.8.  | Urgencias pulmonares                        |  |
| 6.9.  | Trasplantes cardio-pulmonares               |  |
| 7.    | Trasplante de páncreas.....                 |  |
| 7.1.  | Actividad de trasplante páncreas            |  |
| 7.2.  | Características de los donantes de páncreas |  |
| 7.3.  | Páncreas generados y desechados             |  |
| 7.4.  | Generación e intercambio de páncreas        |  |
| 7.5.  | Indicaciones de trasplante                  |  |
| 7.6.  | Evolución de la Lista de espera de páncreas |  |
| 8.    | Trasplante de intestino.....                |  |

# 1. Introducción

En el año 2011 hubo en España 1.667 donantes de órganos. Esta actividad de donación (sumada a la procedente de donantes vivos) permitió la realización de un total de 4.222 trasplantes de órganos sólidos: 2498 trasplantes renales, 1137 trasplantes hepáticos, 237 trasplantes cardíacos, 230 trasplantes pulmonares, 111 trasplantes de páncreas y 9 trasplantes intestinales.

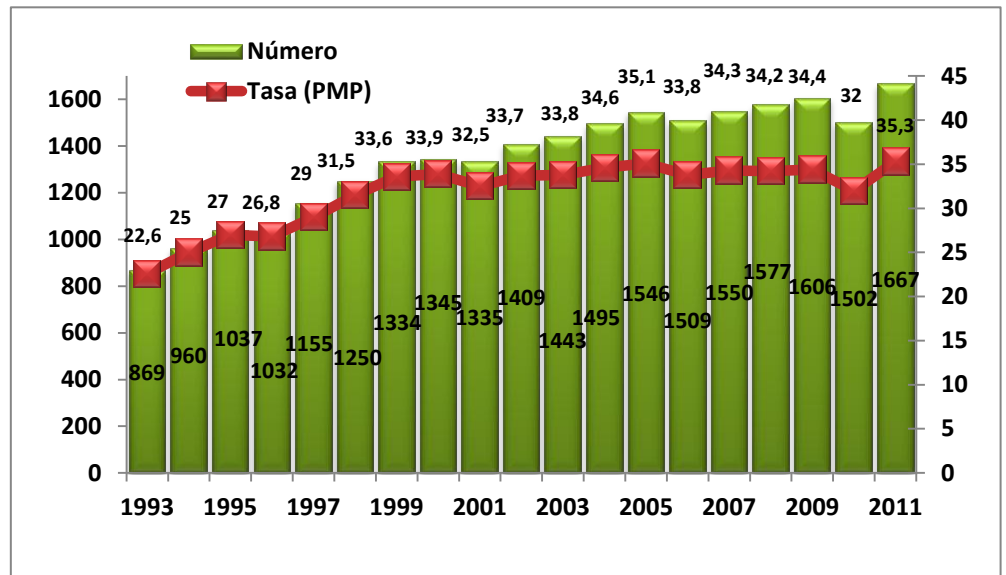


Figura 1.1. : Número Total y Tasa anual (p.m.p) de donantes de órganos. España 1993-2011

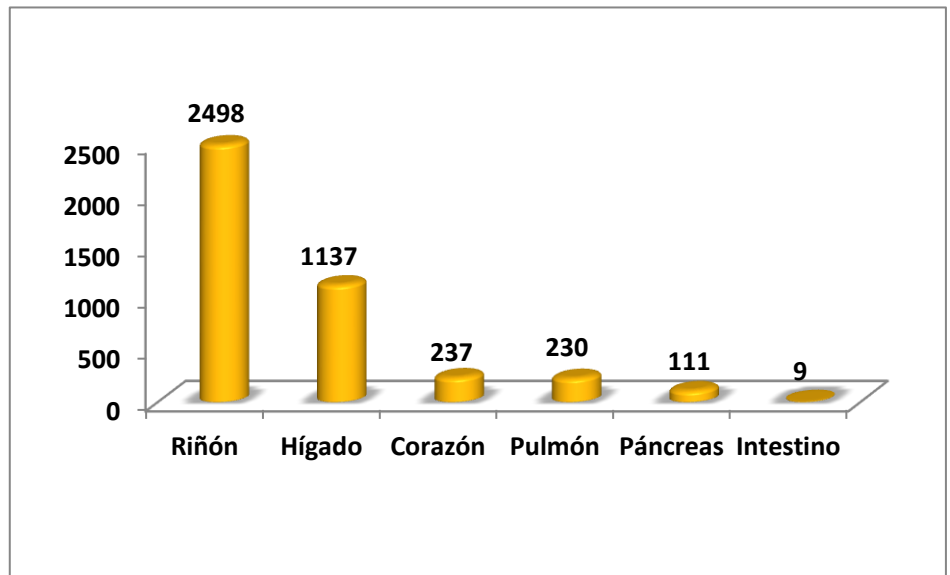


Figura 1.2. : Trasplantes de órganos sólidos 2011

En la Fig. 1.3 aparece la tendencia interanual de donación en nuestro país en los últimos cuatro años y en la figura 1.4 se pueden observar los datos de donación internacionales.

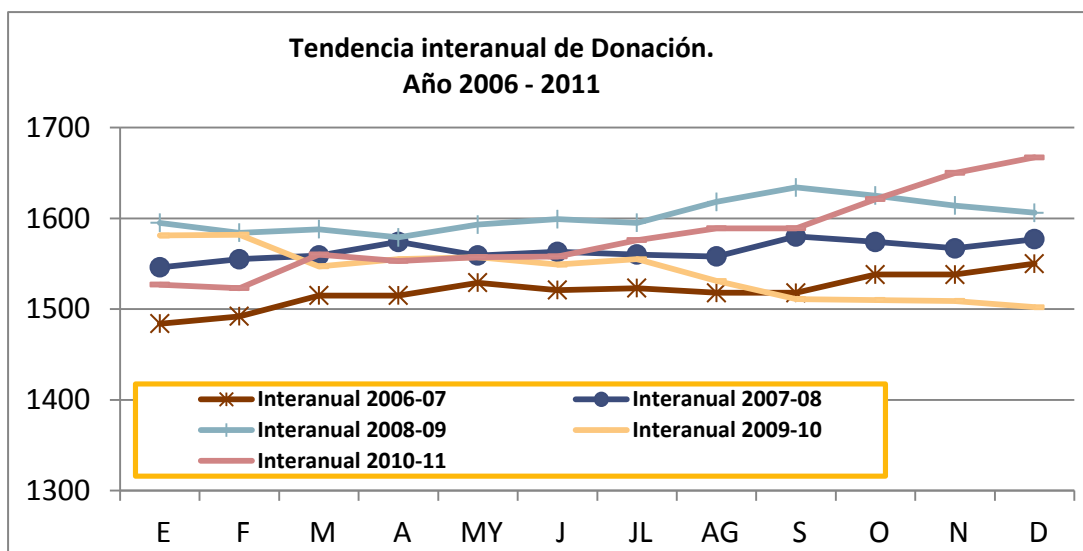


Figura 1.3. Tendencia interanual de donación en España. 2006-2011

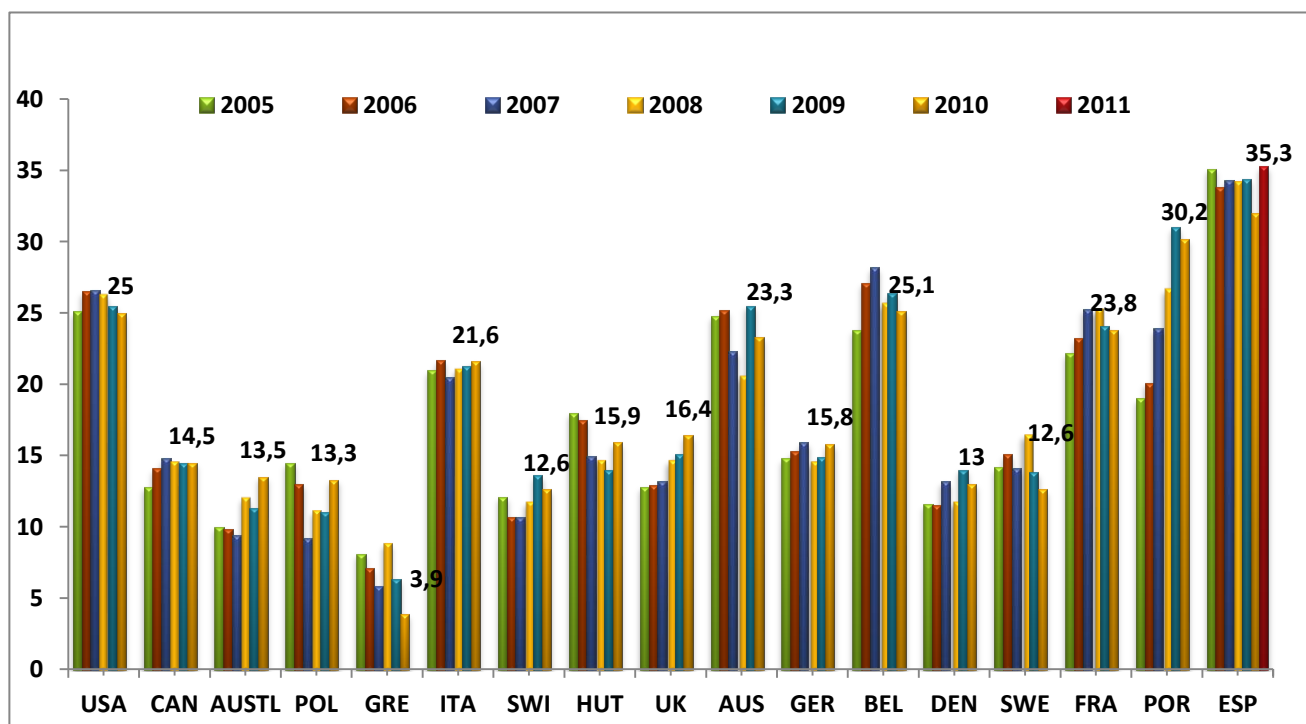


Figura 1.4. : Tasa anual (p.m.p.) de donantes de órganos en España y otros países. 2005-2011

En las Tablas siguientes aparecen los indicadores de donación y trasplante de diferentes países del mundo (Fuente Newsletter Transplant 2011. Datos de actividad de 2010):

| PAISES   | AUSTRIA    | BELGICA    | BULGARIA | CHIPRE    | R. CHECA   | DINAMARCA  | ESTONIA   | FINLANDIA  | FRANCIA     | ALEMANIA    |
|--|------------|------------|----------|-----------|------------|------------|-----------|------------|-------------|-------------|
| <b>Población (millón habitantes)</b>                     | 8.4        | 10.8       | 7.5      | 0.9       | 10.5       | 5.5        | 1.3       | 5.4        | 64.7        | 81.8        |
| <b>DONACION</b>  |            |            |          |           |            |            |           |            |             |             |
| Donante cadáver (incluido donante en asistolia) (-pmp -) | 196 (23.3) | 221 (20.5) | 20 (2.7) | 4 (4.4)   | 206 (19.6) | 73 (13.0)  | 23 (17.7) | 92 (17.0)  | 1538 (23.8) | 1296 (15.8) |
| Donante en asistolia (pmp)                               | -          | 50 (4.6)   | 0        | 0         | 2 (0.2)    | 0          | 0         | 0          | 62 (1.0)    | 0           |
| % donante multiorgánico                                  | 81.6       | 77.9       | 80       | 100       | 58.3       | 70         | 6         | 63         | 86.4        | 87          |
| <b>TRASPLANTE</b>  |            |            |          |           |            |            |           |            |             |             |
| <b>RIÑÓN</b>   |            |            |          |           |            |            |           |            |             |             |
| TX –incluidas todas las combinaciones- (pmp)             | 407 (48.5) | 453 (41.9) | 48 (6.4) | 32 (35.6) | 364 (34.7) | 232 (41.4) | 39 (30.0) | 175 (32.4) | 2892 (44.7) | 2937 (35.9) |
| % (TX vivo/Total Tx)                                     | 14.5       | 10.8       | 25       | 75        | 4.7        | 44         | 10.3      | 6.3        | 9.8         | 22.6        |
| Pediátrico <15 años                                      | 10         | 9          | -        | 2         | 2          | 8          | -         | 3          | 63          | -           |
| Donante cadáver (pmp)                                    | 348 (41.4) | 404 (37.7) | 36 (4.8) | 8 (8.9)   | 347 (33.0) | 130 (23.2) | 35 (26.9) | 164 (30.4) | 2609 (40.3) | 2272 (27.8) |
| -Trasplante único (pmp)                                  | 346 (41.2) | 400 (37.0) | 36 (4.8) | 8 (8.9)   | 341 (32.5) | 130 (23.2) | 35 (26.9) | 164 (30.4) | 2553 (39.5) | 2250 (27.5) |
| -Doble trasplante (pmp)                                  | 2 (0.2)    | 4 (0.4)    | 0        | -         | 6 (0.6)    | 0          | 0         | 0          | 56 (0.9)    | 22 (0.3)    |
| Tx de vivo (pmp)   | 59 (7.0)   | 49 (4.5)   | 12 (1.6) | 24 (26.7) | 17 (1.6)   | 102 (18.2) | 4 (3.1)   | 11 (2.0)   | 283 (4.4)   | 665 (8.1)   |
| TX renal donantes en asistolia (pmp)                     | 5 (0.6)    | 61 (5.6)   | -        | -         | 4 (0.4)    | -          | -         | -          | 79 (1.2)    | 0           |
| <b>HÍGADO</b>  |            |            |          |           |            |            |           |            |             |             |
| TX –incluidas todas las combinaciones- (pmp)             | 141 (16.8) | 243 (22.5) | 15 (2.0) | -         | 102 (9.7)  | 47 (8.4)   | 3 (2.3)   | 50 (9.3)   | 1092 (16.9) | 1282 (15.7) |
| Pediátrico <15 años                                      | 6          | 35         | 3        | -         | -          | 10         | -         | 5          | 69          | -           |
| -Split hígado (pmp)                                      | 3 (0.4)    | 3 (0.3)    | 13       | -         | 0          | -          | -         | -          | 80 (1.2)    | 107 (1.3)   |

|  |            |            |         |   |          |          |         |          |           |           |
|--|------------|------------|---------|---|----------|----------|---------|----------|-----------|-----------|
| -TX dominó (pmp)                                   | 0          | 0          | 0       | - | 1 (0.1)  | 0        | -       | 0        | 8 (0.1)   | 5 (0.1)   |
| -TX de vivo (pmp)                                  | 2 (0.2)    | 33 (3.0)   | 2 (0.3) | - | 0        | 0        | -       | 0        | 17 (0.3)  | 90 (1.1)  |
| TX hepático de donantes en asistolia (pmp)         | 1 (0.1)    | 25 (2.3)   | 0       | - | 0        | -        | -       | -        | 3 (0.0)   | 0         |
| <b>CORAZÓN</b>                                     |            |            |         |   |          |          |         |          |           |           |
| TX - incluido Tx de corazón-pulmón- (pmp)          | 69 (8.2)   | 68 (6.3)   | 5 (0.7) | - | 70 (6.7) | 22 (3.9) | 0       | 22 (4.1) | 375 (5.8) | 393 (4.8) |
| Pediátrico <15 años                                | 5          | 2          | 1       | - | -        | 3        | -       | 0        | 12        | -         |
| <b>CORAZÓN-PULMÓN</b>                              |            |            |         |   |          |          |         |          |           |           |
| Transplantes (pmp)                                 | -          | -          | 0       | - | 0        | 0        | -       | 0        | 19 (0.3)  | 16 (0.2)  |
| Pediátrico <15 años                                | -          | -          | -       | - | -        | -        | -       | -        | 0         | -         |
| <b>PULMÓN</b>                                      |            |            |         |   |          |          |         |          |           |           |
| TX –incluidas todas las combinaciones- (pmp)       | 114 (13.6) | 114 (10.6) | 0       | - | 17 (1.6) | 31 (5.5) | 1 (0.8) | 15 (2.8) | 263 (4.1) | 298 (3.6) |
| Pediátrico <15 años                                | 2          | -          | 0       | - | -        | 0        | -       | 0        | 6         | -         |
| -Unipulmonar (pmp)                                 | 5 (0.6)    | 21 (1.9)   | 0       | - | 6 (0.6)  | 7 (1.3)  | 1 (0.8) | 0        | 60 (0.9)  | 44 (0.5)  |
| -Bipulmonar – incluido Tx de corazón-pulmón- (pmp) | 109 (13.0) | 93 (8.6)   | 0       | - | 11 (1.0) | 24 (4.3) | -       | 15 (2.8) | 203 (3.1) | 254 (3.1) |
| Tx pulmonar de donantes en asistolia (pmp)         | -          | 13 (1.2)   | 0       | - | 0        | 0        | -       | 0        | 0         | 0         |
| <b>PANCREAS</b>                                    |            |            |         |   |          |          |         |          |           |           |
| TX –incluidas todas las combinaciones- (pmp)       | 31 (3.7)   | 22 (2.0)   | 0       | - | 20 (1.9) | -        | -       | 2 (0.4)  | 96 (1.5)  | 163 (2.0) |
| Pediátrico <15 años                                | 0          | 0          | 0       | - | -        | -        | -       | -        | 1         | -         |
| -TX de páncreas-riñón (pmp)                        | 27 (3.2)   | 22 (2.0)   | 0       | - | 16 (1.5) | -        | -       | 2 (0.4)  | 83 (1.3)  | 144 (1.8) |
| -Tx de páncreas aislado (pmp)                      | 4 (0.5)    | -          | 0       | - | 4 (0.4)  | -        | -       | -        | 12 (0.2)  | 13 (0.2)  |
| <b>INTESTINO DELGADO</b>                           |            |            |         |   |          |          |         |          |           |           |
| TX –incluidas todas las combinaciones- (pmp)       | -          | -          | 0       | - | 0        | -        | -       | 1 (0.2)  | 9 (0.1)   | 10 (0.1)  |

|  |   |   |   |   |   |   |   |         |         |         |
|--|---|---|---|---|---|---|---|---------|---------|---------|
| Pediátrico <15 años                    | - | - | 0 | - | 0 | - | - | -       | 7       | -       |
| -Tx hígado-intestino (pmp)             | - | - | 0 | - | 0 | - | - | -       | 4 (0.1) | 5 (0.1) |
| -TX de intestino delgado aislado (pmp) | - | - | 0 | - | 0 | - | - | 1 (0.2) | 4 (0.1) | 4 (0.0) |
| <b>MULTIVISCERAL</b> (pmp)             | - | - | 0 | - | 0 | - | - | -       | 1 (0.0) | 5 (0.1) |

| PAISES   | GRECIA     | HUNGRIA    | IRLANDA    | ITALIA      | LATVIA    | LITUANIA  | LUXEMBOURGO | MALTA     | HOLANDA    | POLONIA    |
|--|------------|------------|------------|-------------|-----------|-----------|-------------|-----------|------------|------------|
| <b>Población (millón habitantes)</b>                     | 11.2       | 10.0       | 4.6        | 60.1        | 2.3       | 3.3       | 0.5         | 0.4       | 16.6       | 38.1       |
| <b><u>DONACION</u></b>                                   |            |            |            |             |           |           |             |           |            |            |
| Donante cadáver (incluido donante en asistolia) (-pmp -) | 44 (3.9)   | 159 (15.9) | 58 (12.6)  | 1298 (21.6) | 34 (14.8) | 36 (10.9) | 3 (6.0)     | 9 (22.5)  | 227 (13.7) | 509 (13.3) |
| Donante en asistolia (pmp)                               | 0          | 0          | 0          | 3 (0.1)     | 11 (4.8)  | 0         | 0           | 0         | 84 (5.1)   | 0          |
| % donante multiorgánico                                  | 39         | 43.4       | -          | 75.4        | 2.5       | 58.3      | 100         | 100       | 76.2       | 47.0       |
| <b><u>TRASPLANTE</u></b>                                 |            |            |            |             |           |           |             |           |            |            |
| <b><u>RIÑÓN</u></b>                                      |            |            |            |             |           |           |             |           |            |            |
| TX –incluidas todas las combinaciones- (pmp)             | 135 (12.1) | 307 (30.7) | 174 (37.8) | 1694 (28.2) | 66 (28.7) | 71 (21.5) | 6 (12.0)    | 14 (35.0) | 867 (52.2) | 999 (26.2) |
| % (TX vivo/Total Tx)                                     | 20         | 13.7       | 13.2       | 10.7        | 3.0       | 11.3      | 0           | 21.4      | 54.6       | 5          |
| Pediátrico <15 años                                      | 2          | 7          | 2          | 43          | 0         | 1         | 0           | 0         | 28         | 39         |
| Donante cadáver (pmp)                                    | 108 (9.6)  | 265 (26.5) | 151 (32.8) | 1512 (27.2) | 64 (27.8) | 63 (19.1) | 6 (12.0)    | 11 (27.5) | 394 (23.7) | 949 (24.9) |
| -Trasplante único (pmp)                                  | -          | 265 (26.5) | 147 (32.0) | 1386 (23.1) | 64 (27.8) | 63 (19.1) | 6 (12.0)    | 11 (27.5) | 391 (23.5) | 947 (24.8) |
| -Doble trasplante (pmp)                                  | -          | 0          | 4 (0.9)    | 126 (2.1)   | 0         | 0         | 0           | 0         | 3 (0.2)    | 2 (0.1)    |
| Tx de vivo (pmp)   | 27 (2.4)   | 42 (4.2)   | 23 (5.0)   | 182 (3.0)   | 2 (0.9)   | 8 (2.4)   | 0           | 3 (7.5)   | 473 (28.5) | 50 (1.3)   |
| TX renal donantes en asistolia (pmp)                     | 0          | 0          | -          | 0           | 17 (7.4)  | 0         | 0           | 0         | 129 (7.8)  | 0          |

| <b>HÍGADO</b>                                      |          |          |          |             |   |          |         |         |           |           |
|--|----------|----------|----------|-------------|---|----------|---------|---------|-----------|-----------|
| TX –incluidas todas las combinaciones- (pmp)       | 25 (2.2) | 43 (4.3) | 38 (8.3) | 1014 (16.9) | 0 | 13 (3.9) | 3 (6.0) | 0       | 135 (8.1) | 237 (6.2) |
| Pediátrico <15 años                                | 1        | 3        | 0        | 67          | 0 | 0        | 0       | 0       | 23        | 34        |
| -Split hígado (pmp)                                | 0        | 0        | 0        | 84 (1.4)    | 0 | 0        | 0       | 0       | 8 (0.5)   | 0         |
| -TX dominó (pmp)                                   | 0        | 0        | 0        | 0           | 0 | 0        | 0       | 0       | 1 (0.1)   | 0         |
| -TX de vivo (pmp)                                  | 0        | 0        | 0        | 12 (0.2)    | 0 | 0        | 0       | 0       | 4 (0.2)   | 20 (0.5)  |
| TX hepático de donantes en asistolia (pmp)         | 0        | 0        | 0        | 0           | 0 | 0        | 0       | 0       | 16 (1.0)  | 0         |
| <b>CORAZÓN</b>                                     |          |          |          |             |   |          |         |         |           |           |
| TX - incluido Tx de corazón-pulmón- (pmp)          | 5 (0.4)  | 20 (2.0) | 3 (0.7)  | 273 (4.5)   | 0 | 10 (3.0) | 3 (6.0) | 1 (2.5) | 46 (2.8)  | 79 (2.1)  |
| Pediátrico <15 años                                | 1        | 4        | 0        | 19          | 0 | 0        | 0       | 0       | 2         | 6         |
| <b>CORAZÓN-PULMÓN</b>                              |          |          |          |             |   |          |         |         |           |           |
| Transplantes (pmp)                                 | 0        | 0        | 0        | 4 (0.1)     | 0 | 0        | 0       | 0       | 1 (0.1)   | 0         |
| Pediátrico <15 años                                | 0        | 0        | 0        | 0           | 0 | 0        | 0       | 0       | -         | 0         |
| <b>PULMÓN</b>                                      |          |          |          |             |   |          |         |         |           |           |
| TX –incluidas todas las combinaciones- (pmp)       | 2 (0.2)  | -        | 4 (0.9)  | 107 (1.8)   | 0 | 0        | 2 (4.0) | 0       | 67 (4.0)  | 12 (0.3)  |
| Pediátrico <15 años                                | 1        | -        | 0        | 3           | 0 | 0        | 0       | 0       | 3         | 0         |
| -Unipulmonar (pmp)                                 | -        | -        | 0        | 37 (0.6)    | 0 | 0        | 2 (4.0) | 0       | 5 (0.3)   | 7 (0.2)   |
| -Bipulmonar – incluido Tx de corazón-pulmón- (pmp) | -        | -        | 4 (0.9)  | 70 (1.2)    | 0 | 0        | 0       | 0       | 62 (3.7)  | 5 (0.1)   |
| Tx pulmonar de donantes en asistolia (pmp)         | -        | -        | 0        | 0           | 0 | 0        | 0       | 0       | -         | 0         |
| <b>PANCREAS</b>                                    |          |          |          |             |   |          |         |         |           |           |
| TX –incluidas todas las combinaciones- (pmp)       | -        | 9 (0.9)  | 8 (1.7)  | 47 (0.8)    | 0 | 0        | 0       | 0       | 20 (1.2)  | 20 (0.5)  |
| Pediátrico <15 años                                | -        | 0        | 0        | 1           | 0 | 0        | 0       | 0       | -         | 0         |



|  |   |         |         |          |   |   |         |   |          |          |
|--|---|---------|---------|----------|---|---|---------|---|----------|----------|
| -Tx de páncreas-riñón (pmp)                  | - | 9 (0.9) | 8 (1.7) | 27 (0.4) | 0 | 0 | 0       | 0 | 14 (0.8) | 19 (0.5) |
| -Tx de páncreas aislado (pmp)                | - | 0       | 0       | 16 (0.3) | 0 | 0 | 0       | 0 | 5 (0.3)  | 1 (0.0)  |
| <b>INTESTINO DELGADO</b>                     |   |         |         |          |   |   |         |   |          |          |
| TX –incluidas todas las combinaciones- (pmp) | - | -       | 0       | 6 (0.1)  | 0 | 0 | 1 (2.0) | 0 | -        | 0        |
| Pediátrico <15 años                          | - | -       | 0       | 3        | 0 | 0 | 0       | 0 | -        | 0        |
| -Tx hígado-intestino (pmp)                   | - | -       | 0       | 1 (0.0)  | 0 | 0 | 0       | 0 | -        | 0        |
| -TX de intestino delgado aislado (pmp)       | - | -       | 0       | 4 (0.1)  | 0 | 0 | 1 (2.0) | 0 | -        | 0        |
| <b>MULTIVISCERAL</b> (pmp)                   | - | -       | 0       | 1 (0.0)  | 0 | 0 | 0       | 0 | -        | 0        |

| PAISES   | PORTUGAL   | RUMANIA    | SLOVAKIA   | SLOVENIA  | ESPAÑA      | SUECIA     | REINO UNIDO | AUSTRALIA  | CANADA      | CROACIA    |
|--|------------|------------|------------|-----------|-------------|------------|-------------|------------|-------------|------------|
| <b>Población</b>   | 10.6       | 21.2       | 5.4        | 2.0       | 47.0        | 9.4        | 61.9        | 22.3       | 34.1        | 4.4        |
| <b>DONACION</b>  |            |            |            |           |             |            |             |            |             |            |
| Donante cadáver ( incluido donante en asistolia) (- pmp -) | 323 (30.2) | 70 (3.3)   | 91 (16.8)  | 41 (20.5) | 1502 (32.0) | 118 (12.6) | 1015 (16.4) | 302 (13.5) | 495 (14.5)  | 135 (30.7) |
| Donante en asistolia (pmp)                                 | 0          | 0          | 0          | 0         | 130 (2.7)   | 0          | 373 (6.0)   | 67 (3.0)   | 72 (2.1)    | 0          |
| % donante multiorgánico                                    | 69.0       | 75.0       | 54         | 87.8      | 81.0        | 89.0       | 72.3        | 80         | -           | 85.8       |
| <b>TRASPLANTE</b>  |            |            |            |           |             |            |             |            |             |            |
| <b>RIÑÓN</b>   |            |            |            |           |             |            |             |            |             |            |
| TX –incluidas todas las combinaciones- (pmp)               | 573 (53.6) | 212 (10.0) | 169 (31.3) | 61 (30.5) | 2225 (47.3) | 370 (39.4) | 2724 (44.0) | 841 (37.7) | 1234 (36.2) | 244 (55.5) |
| % (TX vivo/Total Tx)                                       | 8.9        | 41.5       | 4.1        | 0         | 10.8        | 45.4       | 37.7        | 34.8       | 39.3        | 8.2        |
| Pediátrico <15 años  | 16         | 2          | 3          | 0         | 58          | 10         | 101         | 14         | -           | -          |
| Donante cadáver (pmp)                                      | 522 (48.8) | 124 (5.8)  | 162 (30.0) | 61 (30.5) | 1985 (42.2) | 202 (21.5) | 1698 (27.4) | 548 (24.6) | 749 (22.0)  | 224 (50.9) |
| -Trasplante único (pmp)                                    | 520 (48.6) | 123 (5.8)  | 157 (29.1) | 61 (30.5) | 1960 (41.7) | 199 (21.2) | 1676 (27.1) | 542 (24.3) | 737 (21.6)  | 214 (48.6) |

|  |            |          |          |           |            |            |             |            |            |            |
|--|------------|----------|----------|-----------|------------|------------|-------------|------------|------------|------------|
| -Doble trasplante (pmp)                            | 2 (0.2)    | 1 (0.0)  | 5 (0.9)  | 0         | 25 (0.5)   | 3 (0.3)    | 22 (0.3)    | 6 (0.3)    | 12 (0.4)   | 3 (0.7)    |
| Tx de vivo (pmp)                                   | 51 (4.8)   | 88 (4.1) | 7 (1.3)  | 0         | 240 (5.1)  | 168 (17.9) | 1026 (16.6) | 293 (13.1) | 485 (14.2) | 20 (4.5)   |
| TX renal donantes en asistolia (pmp)               | 0          | 4 (0.2)  | 0        | 0         | 158 (3.4)  | -          | 580 (9.4)   | 117 (5.2)  | 80 (2.3)   | -          |
| <b>HÍGADO</b>                                      |            |          |          |           |            |            |             |            |            |            |
| TX –incluidas todas las combinaciones- (pmp)       | 245 (22.9) | 51 (2.4) | 33 (6.1) | 23 (11.5) | 971 (20.7) | 137 (14.6) | 712 (11.5)  | 208 (9.3)  | 451 (13.2) | 105 (23.9) |
| Pediátrico <15 años                                | 15         | 0        | 0        | 0         | 46         | 9          | 91          | 5          | -          | -          |
| -Split hígado (pmp)                                | 0          | 0        | 0        | 0         | 20 (0.4)   | -          | 113 (1.8)   | 31 (1.4)   | 17 (0.5)   | 2 (0.4)    |
| -TX dominó (pmp)                                   | 37 (3.5)   | 0        | 0        | 0         | 8 (0.2)    | 7 (0.7)    | 4 (0.1)     | -          | 0          | -          |
| -TX de vivo (pmp)                                  | 0          | 9 (0.4)  | 0        | 0         | 20 (0.4)   | 2 (0.9)    | 24 (0.4)    | 4 (0.2)    | 64 (1.9)   | 2 (0.4)    |
| TX hepático de donantes en asistolia (pmp)         | 0          | 0        | 0        | 0         | 18 (0.4)   | -          | 104 (1.7)   | 12 (0.5)   | 16 (0.5)   | -          |
| <b>CORAZÓN</b>                                     |            |          |          |           |            |            |             |            |            |            |
| TX - incluido Tx de corazón-pulmón- (pmp)          | 50 (4.7)   | 7 (0.3)  | 21 (3.9) | 19 (9.5)  | 243 (5.2)  | 56 (6.0)   | 124 (2.0)   | 68 (3.0)   | 170 (5.0)  | 36 (8.2)   |
| Pediátrico <15 años                                | 2          | 0        | 1        | -         | 0          | 6          | 30          | 2          | -          | -          |
| <b>CORAZÓN-PULMÓN</b>                              |            |          |          |           |            |            |             |            |            |            |
| Transplantes (pmp)                                 | 0          | 0        | 0        | -         | 4 (0.1)    | 0          | 5 (0.1)     | 3 (0.1)    | 2 (0.1)    | -          |
| Pediátrico <15 años                                | 0          | 0        | 0        | -         | 0          | 0          | 0           | -          | -          | -          |
| <b>PULMÓN</b>                                      |            |          |          |           |            |            |             |            |            |            |
| TX –incluidas todas las combinaciones- (pmp)       | 10 (0.9)   | 0        | 0        | -         | 235 (5.0)  | 51 (5.4)   | 162 (2.6)   | 123 (5.5)  | 180 (5.3)  | -          |
| Pediátrico <15 años                                | 0          | 0        | 0        | -         | 4          | 0          | 5           | 3          | -          | -          |
| -Unipulmonar (pmp)                                 | 5 (0.5)    | 0        | 0        | -         | 105 (2.2)  | 15 (1.6)   | 26 (0.4)    | 10 (0.4)   | 25 (0.7)   | -          |
| -Bipulmonar – incluido Tx de corazón-pulmón- (pmp) | 5 (0.5)    | 0        | 0        | -         | 130 (2.8)  | 36 (3.8)   | 136 (2.2)   | 113 (5.1)  | 155 (4.5)  | -          |
| Tx pulmonar de donantes en asistolia (pmp)         | 0          | 0        | 0        | -         | 8 (0.2)    | 0          | 22 (0.4)    | 27 (1.2)   | 9 (0.3)    | -          |

| <b>PANCREAS</b>                              |          |   |   |         |          |          |           |          |          |         |
|--|----------|---|---|---------|----------|----------|-----------|----------|----------|---------|
| TX –incluidas todas las combinaciones- (pmp) | 15 (1.4) | 0 | 0 | 1 (0.5) | 94 (2.0) | 26 (2.8) | 195 (3.2) | 34 (1.5) | 73 (2.1) | 6 (1.4) |
| Pediátrico <15 años                          | 0        | 0 | 0 | 0       | 0        | 0        | 5         | -        | -        | -       |
| -TX de páncreas-riñón (pmp)                  | 14 (1.3) | 0 | 0 | 1 (0.5) | 71 (1.5) | 26 (2.8) | 151 (2.4) | 33 (1.5) | 50 (1.5) | 5 (1.1) |
| -Tx de páncreas aislado (pmp)                | 1 (0.1)  | 0 | 0 | 0       | 17 (0.4) | 0        | 39 (0.6)  | -        | 23 (0.7) | 1 (0.2) |
| <b>INTESTINO DELGADO</b>                     |          |   |   |         |          |          |           |          |          |         |
| TX –incluidas todas las combinaciones- (pmp) | 0        | 0 | 0 | -       | 5 (0.1)  | -        | 18 (0.3)  | 1 (0.0)  | 1 (0.0)  | -       |
| Pediátrico <15 años                          | 0        | 0 | 0 | -       | 3        | -        | 11        | -        | -        | -       |
| -Tx hígado-intestino (pmp)                   | 0        | 0 | 0 | -       | -        | -        | 2 (0.0)   | -        | 0        | -       |
| -TX de intestino delgado aislado (pmp)       | 0        | 0 | 0 | -       | 1 (0.0)  | -        | 10 (0.2)  | -        | 1 (0.0)  | -       |
| <b>MULTIVISCERAL</b> (pmp)                   | 0        | 0 | 0 | -       | 4 (0.1)  | 1        | 6 (0.1)   | 1 (0.0)  | 3 (0.1)  | -       |

| PAISES   | GEORGIA | ISLANDIA | ISRAEL     | MOLDAVIA | NUEVA ZELANDA | NORUEGA    | SUIZA      | TURQUIA     | USA          |
|--|---------|----------|------------|----------|---------------|------------|------------|-------------|--------------|
| <b>Población (millón habitantes)</b>                   | 4.5     | 0.3      | 7.5        | 3.8      | 4.3           | 4.9        | 7.8        | 75.7        | 317.6        |
| <b><u>DONACION</u></b>                                 |         |          |            |          |               |            |            |             |              |
| Donante cadáver ( incluido donante en asistolia) (pmp) | -       | 3 (10.0) | 60 (8.0)   | 0        | 38 (8.8)      | 102 (20.8) | 98 (12.6)  | 272 (3.6)   | 7943 (25.0)  |
| Donante en asistolia (pmp)                             | -       | 0        | 2 (0.3)    | 0        | 1 (0.2)       | 0          | 0          | 0           | -            |
| % donante multiorgánico                                | -       | 100      | 62         | 0        | 76            | 92         | 99         | 85          | -            |
| <b><u>TRASPLANTE</u></b>                               |         |          |            |          |               |            |            |             |              |
| <b><u>RIÑÓN</u></b>                                    |         |          |            |          |               |            |            |             |              |
| TX –incluidas todas las combinaciones- (pmp)           | 8 (1.8) | 5 (16.7) | 143 (19.1) | 0        | 112 (26.0)    | 263 (53.7) | 294 (37.7) | 2502 (33.0) | 16898 (53.2) |
| % (TX vivo/Total Tx)                                   | 100     | 100      | 54.5       | 0        | 53.6          | 31.6       | 38.8       | 84.2        | 37.1         |
| Pediátrico <15 años                                    | -       | -        | 11         | 0        | -             | -          | 8          | -           | 748          |
| Donante cadáver (pmp)                                  | -       | -        | 65 (8.7)   | 0        | 52 (12.1)     | 180 (36.7) | 180 (23.1) | 395 (5.2)   | 10622 (33.4) |
| -Trasplante único (pmp)                                | -       | -        | 63 (8.4)   | 0        | 48 (11.2)     | 179 (36.5) | 176 (22.6) | -           | -            |
| -Doble trasplante (pmp)                                | -       | -        | 2 (0.3)    | 0        | 4 (0.9)       | 1 (0.2)    | 4 (0.5)    | -           | -            |
| Tx de vivo (pmp)                                       | 8 (1.8) | 5 (16.7) | 78 (10.4)  | 0        | 60 (13.9)     | 83 (16.9)  | 114 (14.6) | 2107 (27.8) | 6276 (19.8)  |
| TX renal donantes en asistolia (pmp)                   | -       | -        | 3 (0.4)    | 0        | -             | -          | 0          | -           | -            |
| <b><u>HÍGADO</u></b>                                   |         |          |            |          |               |            |            |             |              |
| TX –incluidas todas las combinaciones- (pmp)           | -       | -        | 46 (6.1)   | 0        | 36 (8.4)      | 89 (18.2)  | 100 (12.8) | 695 (9.2)   | 6291 (19.8)  |
| Pediátrico <15 años                                    | -       | -        | 5          | 0        | -             | 7          | 9          | -           | 560          |
| -Split hígado (pmp)                                    | -       | -        | 1 (0.1)    | 0        | 4 (0.9)       | -          | 11 (1.4)   | -           | -            |
| -TX dominó (pmp)                                       | -       | -        | -          | 0        | -             | 0          | 1 (0.1)    | -           | -            |
| -TX de vivo (pmp)                                      | -       | -        | 7 (0.9)    | 0        | 6 (1.4)       | 0          | 1 (0.1)    | 486 (6.4)   | 282 (0.9)    |

|  |   |   |          |   |          |          |          |          |            |
|--|---|---|----------|---|----------|----------|----------|----------|------------|
| TX hepático de donantes en asistolia (pmp)         | - | - | -        | 0 | 1 (0.2)  | -        | 0        | -        | -          |
| <b>CORAZÓN</b>                                     |   |   |          |   |          |          |          |          |            |
| TX - incluido Tx de corazón-pulmón- (pmp)          | - | - | 11 (1.5) | 0 | 11 (2.5) | 32 (6.5) | 35 (4.5) | 86 (1.1) | 2333 (7.3) |
| Pediátrico <15 años                                | - | - | 2        | 0 | -        | 0        | 2        | -        | 359        |
| <b>CORAZÓN-PULMÓN</b>                              |   |   |          |   |          |          |          |          |            |
| Transplantes (pmp)                                 | - | - | -        | 0 | -        | 1        | 0        | -        | 41 (0.1)   |
| Pediátrico <15 años                                | - | - | -        | 0 | -        | 0        | 0        | -        | 1          |
| <b>PULMÓN</b>                                      |   |   |          |   |          |          |          |          |            |
| TX –incluidas todas las combinaciones- (pmp)       | - | - | 32 (4.3) | 0 | 12 (2.8) | 32 (6.5) | 49 (6.3) | 3 (0.0)  | 1770 (5.6) |
| Pediátrico <15 años                                | - | - | 2        | 0 | -        | 0        | 2        | -        | 56         |
| -Unipulmonar (pmp)                                 | - | - | 22 (2.9) | 0 | -        | 1 (0.2)  | 2 (0.3)  | -        | -          |
| -Bipulmonar – incluido Tx de corazón-pulmón- (pmp) | - | - | 10 (1.4) | 0 | 12 (2.8) | 31 (6.3) | 47 (6.0) | -        | -          |
| Tx pulmonar de donantes en asistolia (pmp)         | - | - | -        | 0 | -        | 0        | 0        | -        | -          |
| <b>PANCREAS</b>                                    |   |   |          |   |          |          |          |          |            |
| TX –incluidas todas las combinaciones- (pmp)       | - | - | 3 (0.4)  | 0 | 3 (0.7)  | 15 (3.1) | 14 (1.8) | 29 (0.4) | 1178 (3.7) |
| Pediátrico <15 años                                | - | - | 0        | 0 | -        | -        | 0        | -        | 41         |
| -TX de páncreas-riñón (pmp)                        | - | - | 3 (0.4)  | 0 | 2 (0.5)  | 14 (2.9) | 9 (1.2)  | -        | 828 (2.6)  |
| -Tx de páncreas aislado (pmp)                      | - | - | 0        | 0 | 1 (0.2)  | 1 (0.2)  | 5 (0.6)  | -        | 350 (1.1)  |
| <b>INTESTINO DELGADO</b>                           |   |   |          |   |          |          |          |          |            |
| TX –incluidas todas las combinaciones- (pmp)       | - | - | -        | 0 | -        | -        | 1 (0.1)  | 3 (0.0)  | 151 (0.5)  |
| Pediátrico <15 años                                | - | - | -        | 0 | -        | -        | 0        | -        | -          |
| -Tx hígado-intestino (pmp)                         | - | - | -        | 0 | -        | -        | 0        | -        | -          |

|  |   |   |   |   |   |   |   |   |   |
|--|---|---|---|---|---|---|---|---|---|
| -TX de intestino delgado aislado (pmp) | - | - | - | 0 | - | - | 0 | - | - |
| <b>MULTIVISCERAL</b> (pmp)             | - | - | - | 0 | - | - | 0 | - | - |